



Saturday June 17, 2023

# 2023 PARADE PARTICIPANT

**GUIDELINES AND RULES**

## **SAFETY FIRST!**

Thank you for participating in the Stonewall Pride Parade.

This guidebook provides all the information you need and includes rules that have been established to ensure the safety of both parade participants and spectators and to comply with our insurance requirements.

Please review this information carefully as these will be strictly enforced.

Any person or persons in violation of these rules and regulations will be removed from the parade and may be fined up to \$500 and banned from future participation.



# ENTRANCE TO PARADE GROUNDS

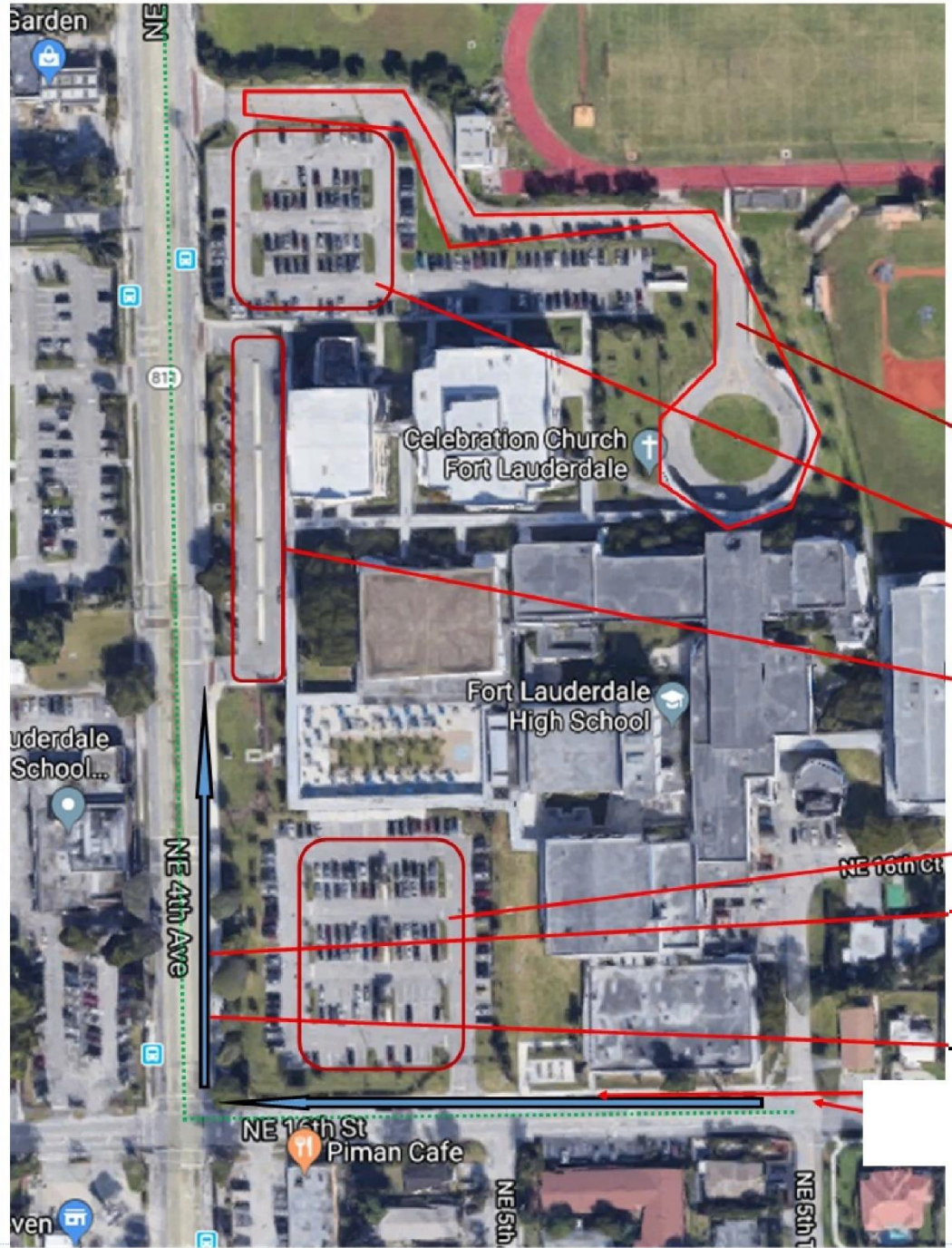
PLEASE REFER TO THE ATTACHED MAP

- The parade assembles at the Fort Lauderdale High School, 1600 NE 4<sup>th</sup> Ave., Fort Lauderdale, at 2pm until 6:30pm on Saturday, June 17, 2023.
- All parade participants are to enter at the corner of NE 16th Street and NE 5<sup>th</sup> Terrace on the south side of the high school. This is the only entrance. NE 16<sup>th</sup> Street will be closed to two-way traffic.
- If you have a particularly large float and are concerned about making the turns to enter the parade lineup grounds, contact us in advance to make special arrangements.



# Parade Staging

Saturday 6-17-2021  
Staging from 2-6:30pm  
Leave staging at 6:45 PM  
Parade starts WM at 7:00 PM  
Street open 9:00 PM



Car groups

Walking Groups

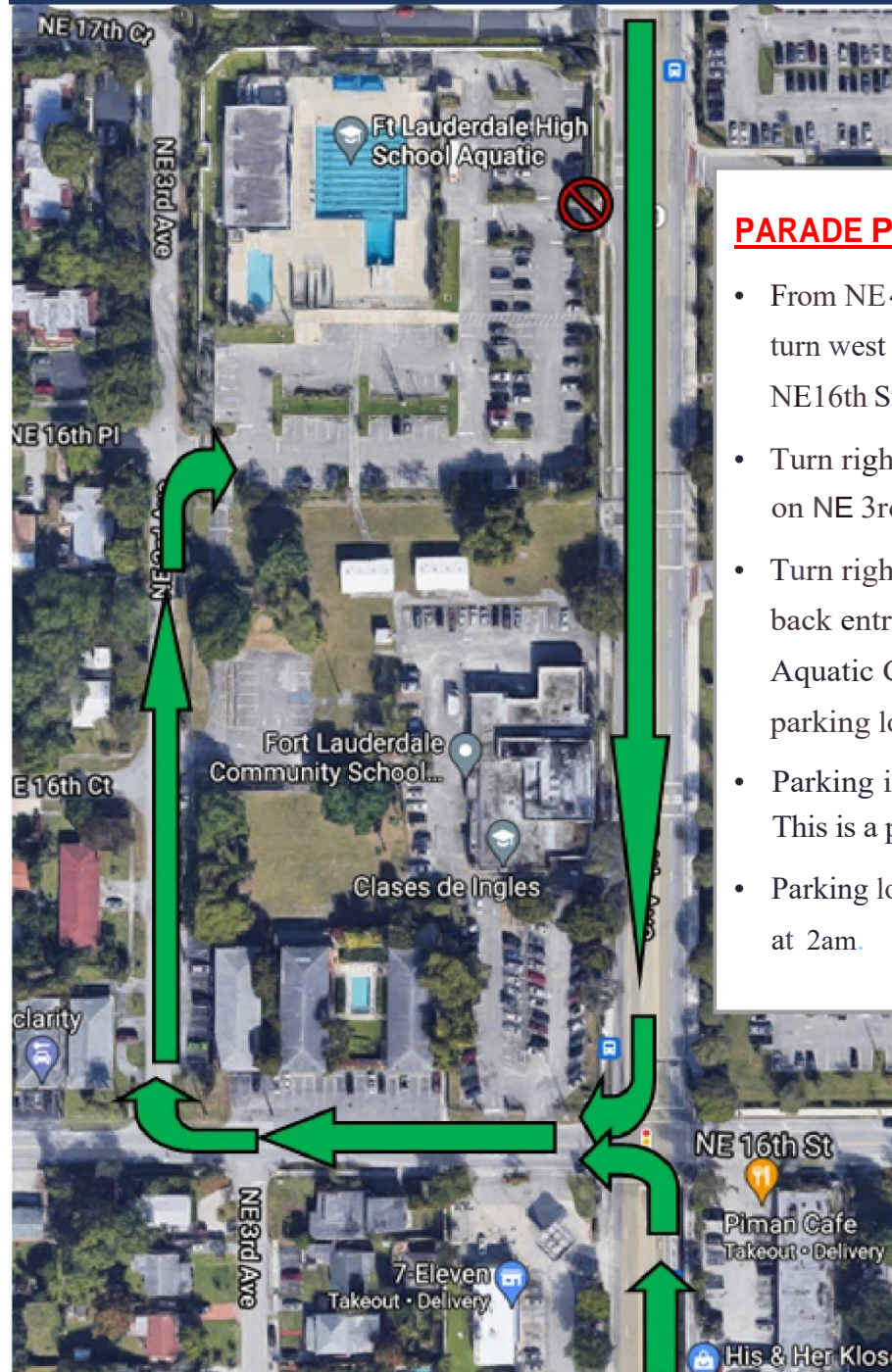
VIP and last vehicle

Government Groups

Parade movement from staging area (inside north-bound lane)

Floats westbound lane of 16th and inside northbound lane of 4th Ave

Parade Check-in



### **PARADE PARKING**

- From NE 4th Ave turn west onto NE 16th St.
- Turn right (north) on NE 3rd Ave.
- Turn right into back entrance of Aquatic Center parking lot.
- Parking is \$20, and This is a private lot.
- Parking lot closes at 2am.

## VEHICLE / FLOAT DIMENSIONS

- All entries must comply with the following maximum dimensions. Entries that are larger than this will be unable to maneuver the parade route or may be unable to clear power lines and other obstacles.
- HEIGHT: 12 feet (to clear power lines)
- LENGTH: 40 feet
- WIDTH: 100 inches (including rails)
- STREET CLEARANCE: 12 inches above ground.



## PARADE LINE UP

- **Line-up starts at 2pm** and ends at 6:30 p.m.  
*Please do not arrive before 2pm.*
- The parade leaves the staging area at 6:45 p.m.
- Your placement in the parade depends on several factors, including your arrival time. If you'd like to be closer to the front of the parade, arrive at 2pm or soon thereafter.
- Positions are assigned to ensure the best parade experience for entrants and spectators. Special requests will be considered but are not guaranteed.
- **The direction and decision of the parade officials at the launch site are final.**



# RULES AFFECTING ALL PARADE ENTRIES

- All registrations and associated entry fees must be paid in full in order to secure your place in the parade lineup.
- *Any entry arriving after 6:30pm will **NOT** be allowed to participate.*
- Do not *throw* items into the crowd — instead, giveaways such as candy, beads, glow sticks, etc., should be *handed* from walkers to spectators.
- Open flames and fireworks are prohibited.
- No person under the influence of alcohol or drugs shall be allowed to participate. The event manager reserves the right to remove any participant for any activity deemed unsafe or for any action or inaction that may cause delay to the progress of the parade.
- Participants assume their own risk. Parade organizers and/or sponsors assume no liability for property damage or personal injuries.
- Children under age 16 must be accompanied by an adult.





## ENTRIES WITH ANIMALS\*

\* “Animals” refers to horses, elephants, and other large animals — not household pets such as dogs and cats.

- Those planning to have animals within their contingent MUST make prior arrangements with Stonewall.
- In accordance with city ordinances, you are responsible for cleaning up after your animals in the parade assembly area and along the parade route.



# WALKING GROUPS

- Groups must stay together in your assigned line up position.
- Each group should be in uniform or costume and maintain a banner or sign for easy recognition of your group.
- No group shall be allowed to stop or slow the parade procession for demonstrations without prior approval.



# FLOATS/VEHICLES

- All drivers must be at least 18 years of age and possess a valid driver's license as well as current vehicle registration and insurance. A copy of these documents must be submitted to Stonewall at least 4 days in advance of the parade.
- All floats must possess a fire extinguisher.
- Parade floats/vehicles must be in good physical as well as operating condition.
- Picking up passengers along the parade route is prohibited.
- All vehicle signage must conform to the spirit of the parade.





# Got a question?

If you can't find the answer to your question(s)  
on the Stonewall Pride web site or in this brochure,  
feel free to contact us:

e-mail [parade@Stonewallpride.lgbt](mailto:parade@Stonewallpride.lgbt)



[www.StonewallPride.lgbt](http://www.StonewallPride.lgbt)